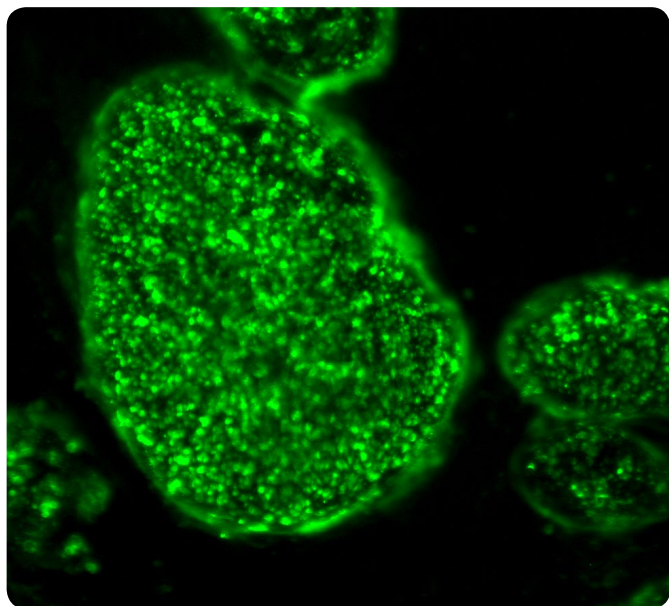


BioLite™ Antibodies

Easily identify pluripotent colonies in live cell culture



- Confirm pluripotency marker expression
- Allows for continued cell culture post-staining
- Low endotoxin, sodium azide-free formulation
- No fixation or permeabilization, only one 30 minute incubation required

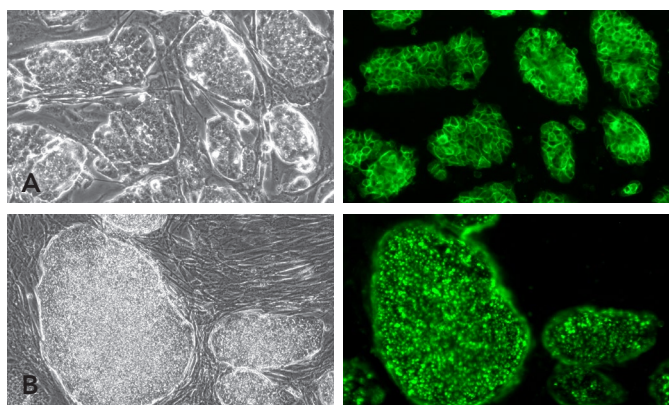


Figure 1. [A] IF analysis of mouse ES cells. Phase contrast view of cells in culture and the same field of view after staining with BioLite SSEA-1 (DyLight 488) Antibody. [B] IF analysis of primary iPS cell colonies at Day 11 of reprogramming adult human fibroblasts. Phase contrast view of cells in culture and the same field of view after staining with BioLite TRA-1-81 (DyLight 488) Antibody. Images were taken at 10X magnification.

Routine characterization of ES and iPS colonies

Sacrificing valuable cells when identifying reprogrammed colonies and confirming pluripotency marker expression can be costly in time and reagent consumption. ESI BIO's BioLite surface markers allow for direct immunofluorescence staining of live, unfixed pluripotent stem cell populations.

BioLite antibodies meet meticulous ES and iPS cell application testing and validation to ensure they are sterile, non-toxic, contain no sodium azide, and are free of culture pathogens. Colonies stained with BioLite antibodies are able to continue in culture with no adverse effect on health, integrity, proliferation or differentiation potential when compared to untreated cells. Primary iPS cell colonies can be identified, assayed and characterized without the need to sacrifice valuable cells to fixation steps or other chemical toxins used in standard characterization methods.

Fast yet reliable verification of pluripotency

When generating iPS cell lines, early identification of pluripotent colonies can save considerable time and effort. Manually picking colonies based on morphology alone is not always reliable. BioLite antibodies aid in selecting reprogrammed colonies confirmed by marker expression.

BioLite antibodies are highly specific, yet gentle on proliferating cells. Using an easy one-step protocol on live cell populations, these antibodies allow for confirmation of iPS cell pluripotency marker expression within 30 minutes.

ORDER INFORMATION

DESCRIPTION	SIZE	CAT. NO.	PRICE (\$)
BioLite™ SSEA-1 (DyLight 488) anti-Human/Mouse Antibody	100 µL	ST11006	\$270
BioLite™ TRA-1-81 (DyLight 488) anti-Human Antibody	100 µL	ST11008	\$270

For the latest information please visit esibio.com.

t 877.636.4978

e orders@esibio.com