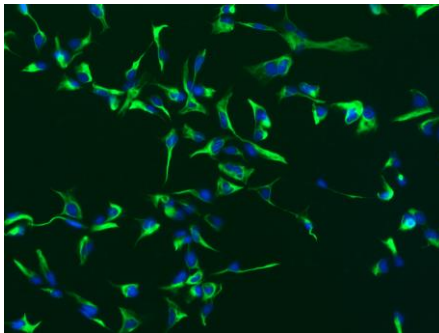


Nestin anti-Human Antibody

Catalog Number: ST11023

Size	100 µL	
Concentration	0.5 mg/mL	
Species Reactivity	Human	
Host	Mouse Monoclonal	
Clone	10C2	
Isotype	IgG1	
Immunogen	A recombinant 150 amino acid fragment from human Nestin conjugated to glutathione S transferase.	
Formulation	Aqueous buffer, 0.09% sodium azide, (pH 7.2).	
Storage and Stability	Store at 2-8°C. Stable for 6 months from date of receipt when stored as directed.	
Applications Tested	Immunocytochemistry/Immunofluorescence (ICC/IF)	
Recommended Dilutions	Immunocytochemistry/Immunofluorescence	1:100
	Western Blot	1:100
	It is recommended that the antibody be titrated for optimal performance for each application.	



ICC analysis on human iPS-derived neural stem cells. Cells were stained with Nestin Antibody at a 1:100 dilution followed by an Alexa 488-conjugated secondary antibody (green). Nuclei were counterstained with DAPI (blue).

Description	Nestin is a class VI intermediate filament protein expressed in stem cells of the developing central nervous system (CNS) but not in mature CNS cells. Its expression is widely used as a predominant marker for neural lineage cells derived from human ES and iPS cells. Nestin is also expressed in non-neural stem cell populations such as pancreatic islet progenitors and hematopoietic progenitors.
References	<p>Lendahl, U., et al. (1990) CNS stem cells express a new class of intermediate filament protein. <i>Cell</i> 60(4): 585-595. PMID: 1689217.</p> <p>Carpenter, M.K., et al. (2001) Enrichment of neurons and neural precursors from human embryonic stem cells. <i>Exp Neurol</i> 172(2): 383-397. PMID: 11716562.</p> <p>Gilyarov, A.V. (2008) Nestin in central nervous system cells. <i>Neurosci Behav Physiol</i> 38(2): 165-169. PMID: 18197384.</p>

PRODUCT WARRANTY

BioTime, Inc. and/or its subsidiaries warrants its products as set forth in the General Terms and Conditions of Sale found on ESI BIO's website at www.esibio.com/termsandconditions. ©2014 BioTime, Inc. All rights reserved. ESI BIO, ESI BIO logo and all other trademarks mentioned herein are the property of BioTime, Inc. and/or its subsidiaries or their respective owners. For support visit www.esibio.com/support or email techsupport@esibio.com